

4-Speed Transmission

Index

Clean all parts thoroughly in solvent and dry with compressed air.

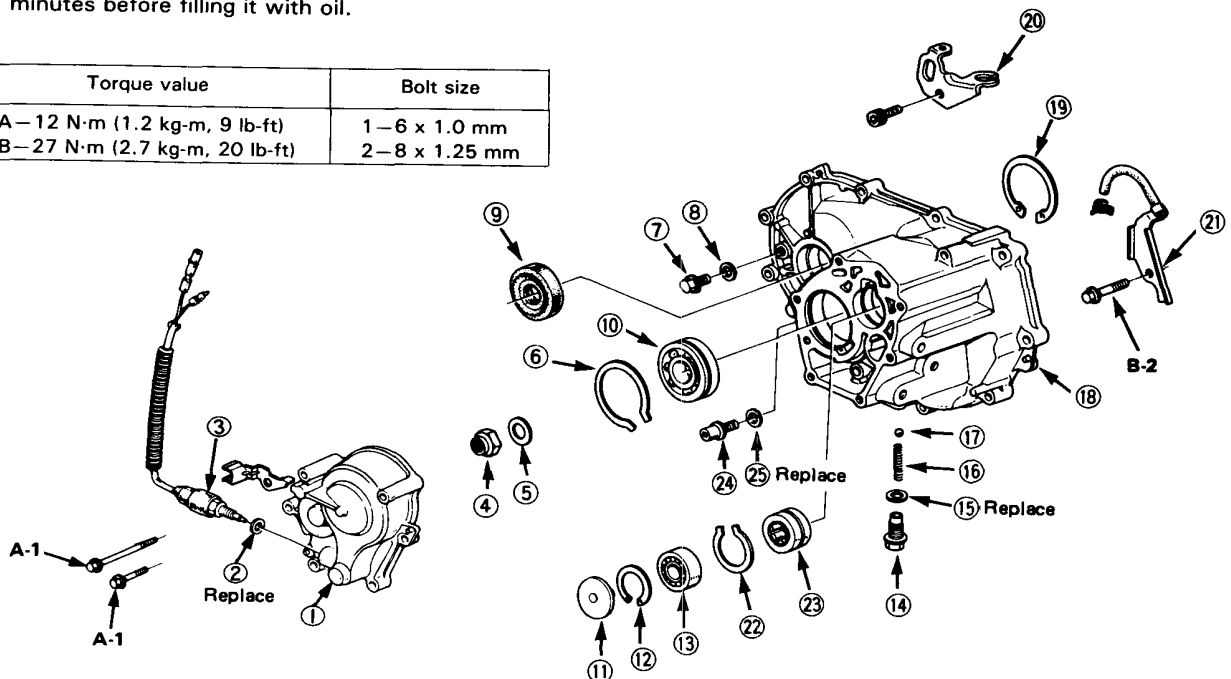


Lubricate all parts with oil before reassembly.

NOTE: This transmission uses no gaskets between the major housings; use Honda P/N 08740-99986 sealant.

Assemble the housings within 20 minutes after applying the sealant and allow it to cure at least 30 minutes before filling it with oil.

Torque value	Bolt size
A—12 N·m (1.2 kg-m, 9 lb-ft)	1—6 x 1.0 mm
B—27 N·m (2.7 kg-m, 20 lb-ft)	2—8 x 1.25 mm



- ① END COVER
- ② 14 mm WASHER
- ③ BACK-UP LIGHT SWITCH
- ④ COUNTERSHAFT LOCKNUT
- ⑤ SPRING WASHER
- ⑥ SNAP RING 65 mm
- ⑦ OIL FILLER BOLT
- ⑧ WASHER
- ⑨ SEAL
- ⑩ BALL BEARING

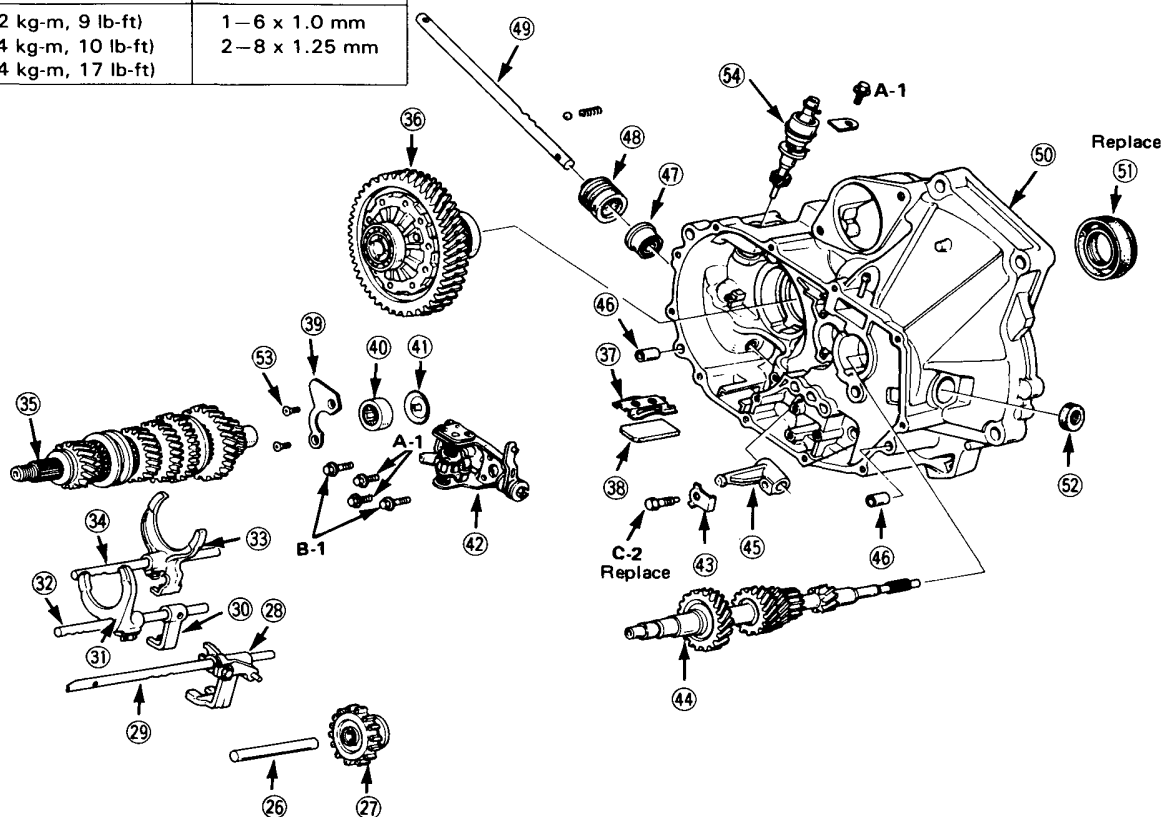
- ⑪ OIL GUIDE PLATE
- ⑫ SNAP RING
- ⑬ BALL BEARING
- ⑭ DETENT BALL RETAINER SCREW
- ⑮ WASHER
- ⑯ DETENT SPRING
- ⑰ DETENT BALL
- ⑱ TRANSMISSION HOUSING
- ⑲ SNAP RING 72 mm
- ⑳ CLUTCH CABLE BRACKET

- ㉑ BREATHER TUBE ASSEMBLY
- ㉒ SNAP RING 45 mm
- ㉓ NEEDLE BEARING
- ㉔ OIL DRAIN PLUG
- ㉕ WASHER



NOTE: Always clean the magnet (38) whenever the transmission housing is disassembled.

Torque value	Bolt size
A—12 N·m (1.2 kg-m, 9 lb-ft)	1—6 x 1.0 mm
B—14 N·m (1.4 kg-m, 10 lb-ft)	2—8 x 1.25 mm
C—24 N·m (2.4 kg-m, 17 lb-ft)	



- 26 REVERSE IDLER GEAR SHAFT
- 27 REVERSE IDLER GEAR
- 28 REVERSE SHIFT GUIDE
- 29 REVERSE SHIFT SHAFT
- 30 3rd SHIFT SHAFT GUIDE
- 31 3rd/4th GEAR SHIFT FORK
- 32 3rd/4th GEAR FORK SHAFT
- 33 1st/2nd GEAR SHIFT FORK
- 34 1st/2nd GEAR FORK SHAFT
- 35 COUNTERSHAFT ASSEMBLY

- 36 DIFFERENTIAL
- 37 HOLD-DOWN PLATE
- 38 MAGNET
- 39 BEARING RETAINER PLATE
- 40 NEEDLE BEARING
- 41 OIL BARRIER PLATE
- 42 SHIFT ARM HOLDER
- 43 LOCK PLATE
- 44 MAINSHAFT
- 45 GEAR SHIFT ARM

- 46 DOWEL PIN
- 47 SEAL
- 48 BOOT
- 49 GEAR SHIFT ROD
- 50 CLUTCH HOUSING
- 51 SEAL
- 52 DUST SEAL
- 53 FLAT SCREW
- 54 SPEEDOMETER DRIVEN GEAR